

CERTIFICATE OF LOCATION OF GOVERNMENT CORNER

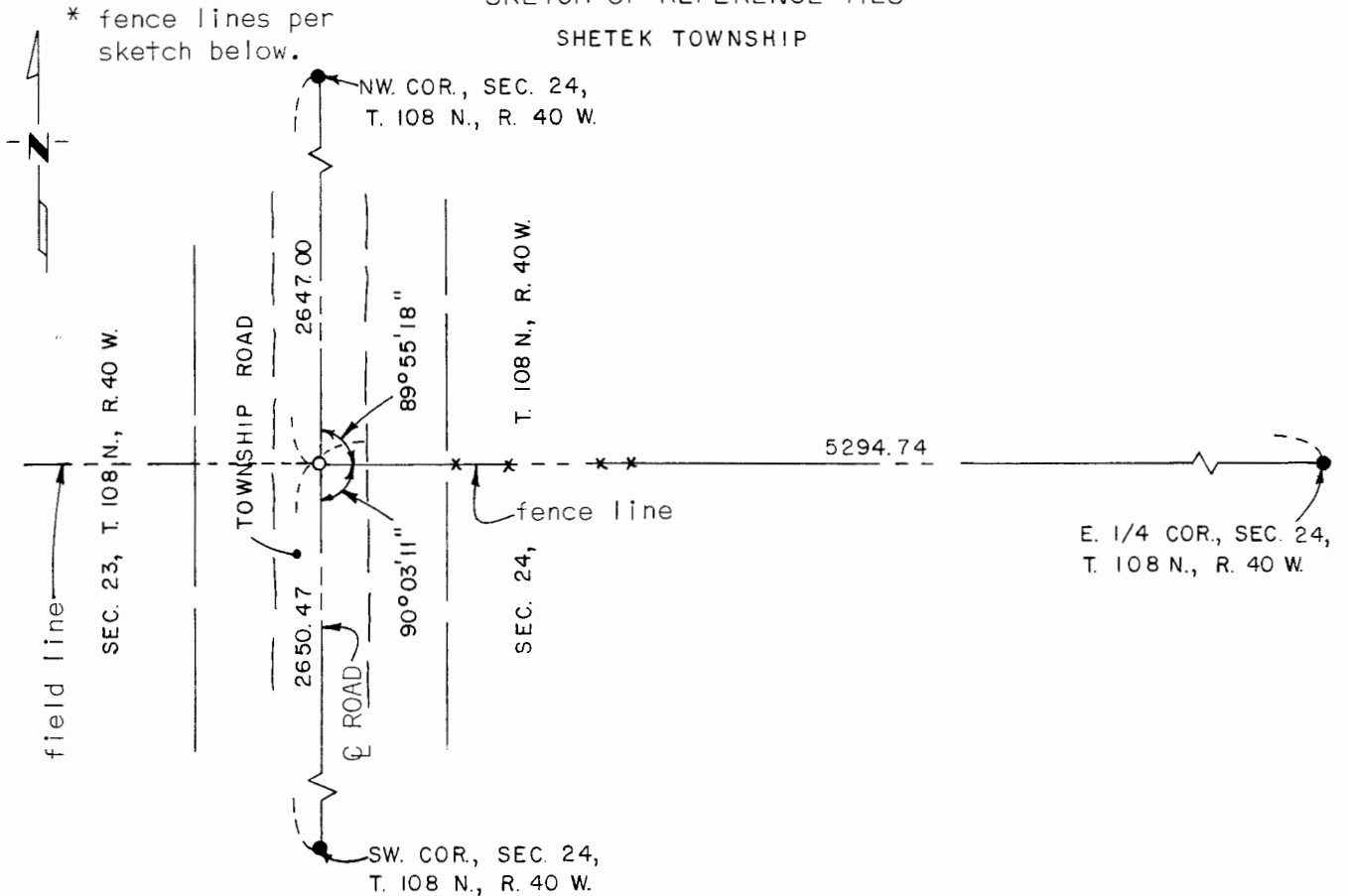
West Quarter _____ Corner of Section 24, Township 108 N., Range 40 W., 5th P.M.

STATE OF MINNESOTA, County of Murray

At the corner location shown on the sketch:

- On _____ found a _____
DATE
- left monument as found, lowered monument, removed monument (explain)
- On 10-30-80 placed a $\frac{1}{2}$ " iron reinforcing bar with "L.S. 12967" cap per
DATE
evidence of the intersection of the north-south road center line and field*

SKETCH OF REFERENCE TIES



I hereby certify that this document and the data contained herein was prepared by me or under my direct supervision.

Gay S. DeF... SIGNATURE 12/28/81 DATE

Registration No. 12967

- Land Surveyor, Professional Engineer
- County Surveyor, County Engineer

OFFICE OF THE COUNTY RECORDER

County of Murray

I hereby certify that this document was filed in the Co. Recorders office at 10 A .M. on the 18th day of February A.D. 1982

County Recorder *Willard W. Ohme*

By _____, Deputy

DOCUMENT NO. _____